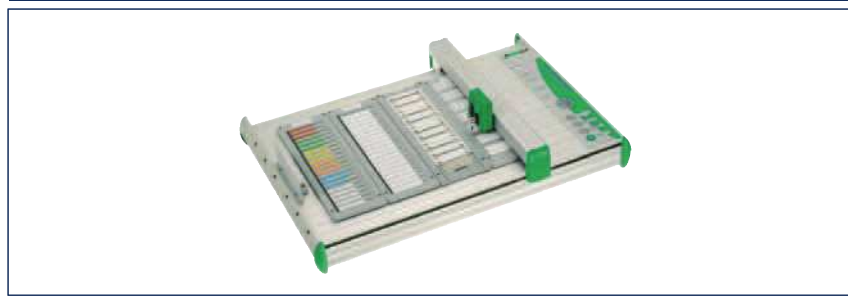


Printing systems and software – Plotter systems EMS

Plotter system EMS-2

- A system that fulfils a wide variety of marking and labelling requirements! The **EMS** Easy Marking System series features excellent versatility and ease of use.
- Generous loading capacity: up to 800 markers for the **EMS-2 DIN A3** with 4 inlays; up to 400 markers for the **EMS-2 DIN A4** with 2 inlays.
 - Short loading times for various materials, thanks to fast and straightforward exchange of inlays and automatic inlay recognition
 - The accompanying labelling software, **CONTA-Sign**, is available in ten languages (German, English, French, Spanish, Hungarian, Italian, Dutch, Polish, Russian, Swedish)
 - Free software updates can be downloaded from our web page
 - High-quality labelling is ensured by the combination of our **PP** and **PPE** pens and the double-sided plotter arm design.
 - Just one inlay for all **CONTA-CLIP** Maxicards
 - Automatic calibration eliminates the need for manual adjustments

EMS-2



Type
Type
Cat. no.

Qty.
1
EMS-2 Starter Kit DIN A3
1 x EMS-2 Easy Marking System DIN A3 (1610.0)
1 x plotter inlay CCI-10 (1606.0)
1x disposable plotter pen PPE 0.35 (1651.0)
Plotter (DIN A3), power pack, connecting cable (parallel cable and USB cable for connecting the plotter to a PC), software: CONTA-Sign CS in ten languages (German, English, French, Spanish, Hungarian, Italian, Dutch, Polish, Russian, Swedish). Runs on Windows: 2000, XP, Vista, 7
1612.0

Technical data for DIN A3 plotter

Printer type
Drive
Intended use
Max. marker height
Max. plotting area
Command language
Max. plotting speed
Max. printing speed
Dimensions (WxHxD)
Weight
Supply voltage
Interfaces
Pen station
Inlays
Ambient temperature

Flat bed plotter
Two-phase step motor
Printing markers of various materials and sizes
10.5 mm, custom solutions up to 15 mm
DIN A3, 440 x 305
Based on HP-GL
40 cm /sec.
80 mm /sec.
660 x 125 x 440
Approx. 8 kg
100-240 V AC 50-60 Hz
Centronix / USB Level 1.1
Max. 4 plotter pens
Max. 4 pieces
10°C...35°C

Type

Type
Type
Cat. no.

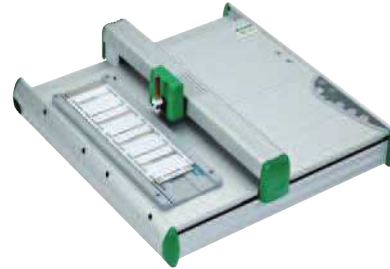
Qty.
1
EMS-2 Starter Kit DIN A4
1 x EMS-2 Easy Marking System DIN A4 (1631.0)
1 x plotter inlay CCI-10 (1606.0)
1x disposable plotter pen PPE 0.35 (1651.0)
Plotter (DIN A3), power pack, connecting cable (parallel cable and USB cable for connecting the plotter to a PC), software: CONTA-Sign CS in ten languages (German, English, French, Spanish, Hungarian, Italian, Dutch, Polish, Russian, Swedish). Runs on Windows: 2000, XP, Vista, 7
9800.0

EMS-eco Marking-System Plotter

A system that fulfils a wide variety of marking and labelling requirements! The entry-level model in our **EMS** Easy Marking System series stands out for the impressive versatility and user-friendliness fitted into its small size.

- Generous loading capacity (up to 400 markers with 2 inlays)
- Short loading times for various materials, thanks to fast and straightforward exchange of inlays and automatic inlay recognition
- The accompanying labelling software, **CONTA-Sign**, is available in ten languages (German, English, French, Spanish, Hungarian, Italian, Dutch, Polish, Russian, Swedish)
- Free software updates can be downloaded from our web page
- High-quality labelling is ensured by the combination of our plotter pens and the double-sided plotter arm design.
- Just one inlay for all **CONTA-CLIP** Maxicards
- Automatic calibration eliminates the need for manual adjustments

EMS-eco



Type

Type

Cat. no.

Technical data

Printer type

Drive

Intended use

Max. marker height

Max. plotting area

Command language

Max. plotting speed

Max. printing speed

Dimensions (WxHxD)

Weight

Supply voltage

Interfaces

Pen station

Inlays

Ambient temperature

Qty.

1

EMS-eco Starter Kit DIN A4

1 x EMS-eco Easy Marking System DIN A4 (1611.0)

1 x plotter inlay CCI-10 (1606.0)

1 x disposable plotter pen PPE 0.35 (1651.0)

Plotter (DINA4), power pack, connecting cable (USB cable for connecting the plotter to a PC), software: CONTA-Sign CS in ten languages (German, English, French, Spanish, Hungarian, Italian, Dutch, Polish, Russian, Swedish), 2000, XP, Vista, 7

1613.0

Flat-bed plotter

Two-phase step motor

Printing markers of various materials and sizes

10.5 mm, custom solutions up to 15 mm

DIN A4, 220 x 305

Based on HP-GL

40 cm /sec.

80 mm /sec.

440 x 125 x 440

approx. 6 kg

100-240V AC 50-60 Hz

USB Level 1.1

-

Max. 2 pieces

10°C...35°C

EMS accessories (DIN A3, DIN A4, eco)

Cat. no.	Type
1630.0	Pressure ball
1595.0	TP (5x1 ml)
1614.0	TPP (5x1 ml)
1597.0	CC-1
1598.0	PC-1
1648.0	Protective dust cover EMS-2 DIN A3
1687.0	Protective dust cover EMS-2 DIN A4
1658.0	Visual calibration tool

Short description

Qty.

The pen is re-activated by means of negative pressure following a refill or a longer period of non-use.	1
Ink cartridge for the PP plotter pen (the etching ink is quick-drying, smudge-proof, non-fading as well as resistant to spirits and benzene when used with suitable plastic materials). The use of cartridges eliminates the need to re-fill the ink.	1
Ink Cartridge Paper for PPP (Plotter Pen Paper) for printing on paper	1
Cleaning container (reusable cleaning container for PP)	1
Pen cleaner (for cleaning two PP plotter pens). Two new clip-seal caps are included.	1
For EMS-2 A3	1
For EMS-2 A4 and EMS eco	1
Visual calibration aid for the EMS-2 (DIN A3 and DIN A4)	1

